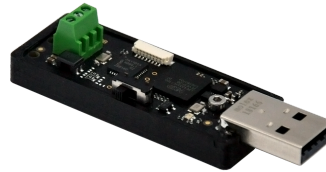




**100BASE-T1 Devices and Tools**



**FC602**  
USB 100BASE-T1 Stick



**FC612**  
USB 100BASE-T1 Stick Raw



**FC401**  
USB SMI/SPI Adapter

Windows 10/11 compatible	✓	✓	✓
Linux* compatible	✓	✓	✓
Broadway2-API for Control-Access	✓	✓	✓
Python3 wrapper for cross-development on Windows and Linux*	✓	✓	✓
Standard Ethernet network device, CDC-ECM driver for Windows 10/11 included	✓	✗	✗
Wireshark-pcap	✓	✗	✗
Wireshark-pcapng files	✓	✓	✗
Broadway2-API for Raw Ethernet Access (Layer2-Frames including HW-Timestamping)	✗	✓	✗
Streamto for AVTP streaming and pcapng record/play	✗	✓	✗
Python3 Raw-Frame encapsulation for easy python3-pypacker usage including HW-Timestamp	✗	✓	✗
External Trigger-In/Trigger-Out including precision timestamp from hardware	✗	✓	✗
Broadway2-API for external SMI/SPI Access	✗	✗	✓

\* Verified and tested on Ubuntu 18.04/20.04 (x86/amd64), Ubuntu 18.04 (ARM) and Raspberry Pi OS (Raspberry Pi 3 and 4)